



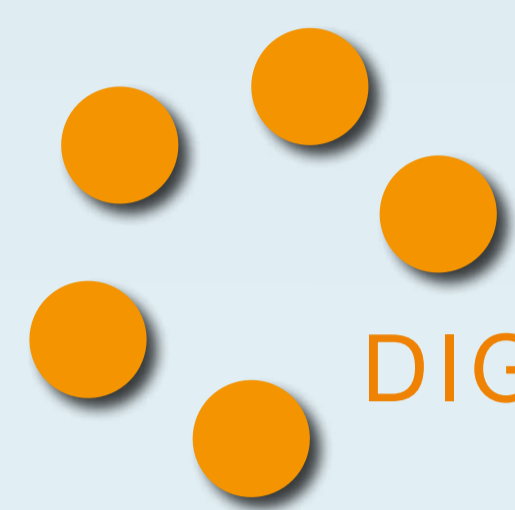
DASISH

DATA SERVICE INFRASTRUCTURE FOR THE SOCIAL SCIENCES AND HUMANITIES

DASISH brings together 5 ESFRI infrastructures by focusing on common activities across disciplines and infrastructures

DASISH aims to provide solutions to common problems

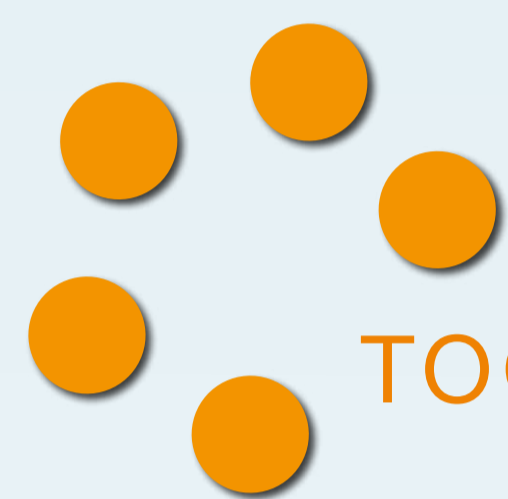
Common solutions will strengthen international collaboration



DIGITAL RESEARCH ENVIRONMENT

DASISH focuses on data quality assurance in the production of primary data in the social sciences by

- Developing software for Europe-wide surveys to collect and code occupation data more accurately, consistently and cost-effectively, and developing a multilanguage questionnaire creation environment
- Giving more effective access to questionnaire metadata
- Creating a fieldwork monitoring system for cross-national surveys to centrally manage distributed fieldwork and help optimize response rates and data quality
- Improving metadata quality through information material and training courses



TOOLS AND SERVICES

DASISH focuses on continuous data enrichment and research discipline specific workflows by

- Developing models for common deposit services which could be provided to all SSH researchers
- Defining typical workflow processing chains and test them based on existing technology
- Creating an annotation framework for data enrichment suitable for SSH researchers
- Establishing a tools and services portal for the joint metadata domain and set up a framework for testing, evaluating and commenting on tools and services



COMMON DATA SERVICES

DASISH focuses on digital preservation techniques, particularly access to and persistent availability of data through networks of community based solutions by

- Promoting the use of PID services (persistent identifiers)
- Seeking to establish a trust environment and a joint data domain based on established authentication and authorisation infrastructure principles
- Working out policy rules, business and access models that can be taken up by a common data service layer providing long term preservation services



LEGAL AND ETHICS

DASISH legal and ethics activities aim to

- Identify legal and ethical issues, constraints and requirements for all data types occurring in the SSH domain as a result of integration and linking
- Cope with the legal and ethical challenges imposed by new data types emerging in the social sciences
- Look for professional long-run preservation strategies based on e-Infrastructures for data in the social sciences and humanities

DASISH is a Cluster Project for 5 ESFRI infrastructures in SSH - Social Sciences and Humanities

ESS European Social Survey
SHARE Survey of Health, Ageing and Retirement in Europe
CESSDA Council of European Social Science Data Archives
CLARIN Common Language Resources and Technology Infrastructure
DARIAH Digital Research Infrastructure for the Arts and Humanities

- All are now starting their construction phases.
- All aim for enhanced visibility and re-usability of digital resources, tools and services
- All are constructing digital, distributed research infrastructures based on
 - giving researchers an environment with access to storing and retrieving data,
 - offering community specific tools and services,
 - persistent, high quality common data services.
- All face identical types of challenges within this general architecture.
- All see the advantages of cross-fertilization and synergy in the construction phase



ICRI 2012, March 21-23, Copenhagen

Hans Jørgen Marker, Swedish National Data Service, University of Gothenburg
 Hanne Fersøe, Centre for Language Technology, University of Copenhagen
www.dasish.eu

